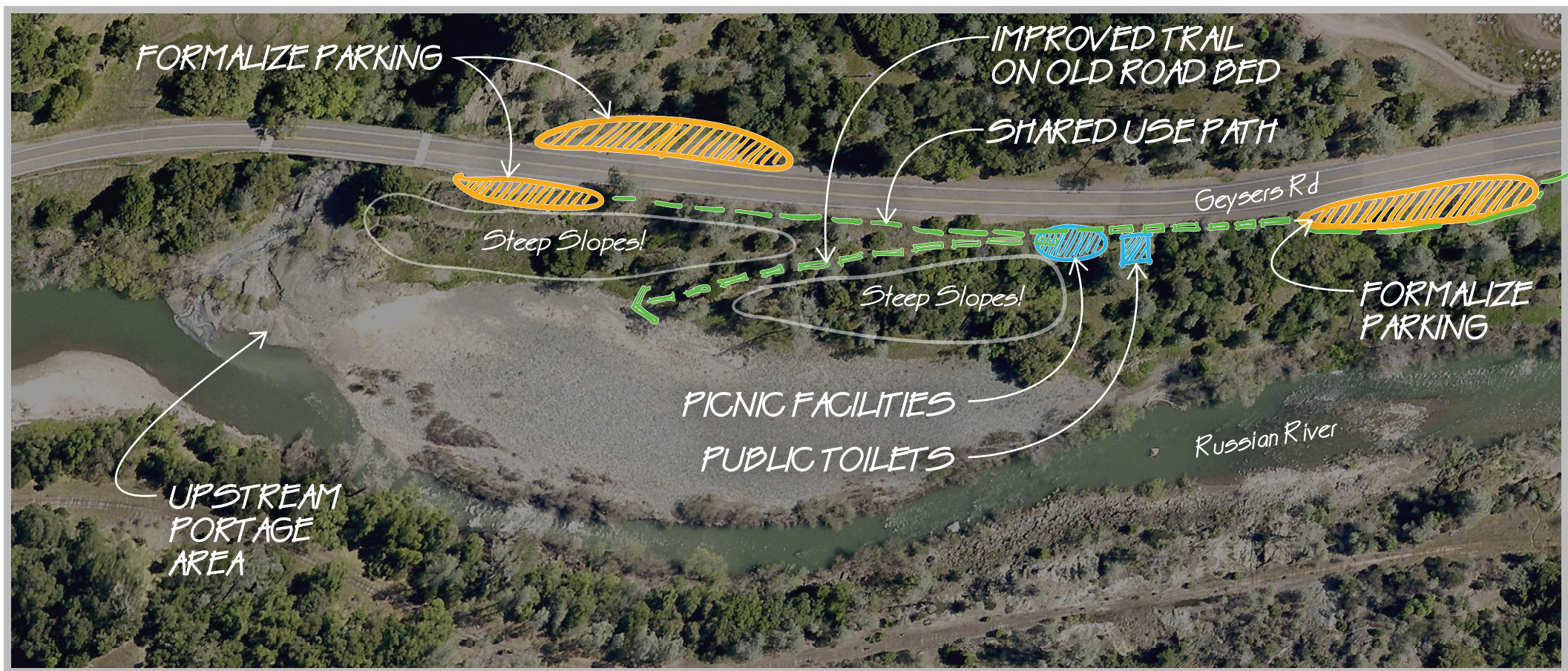
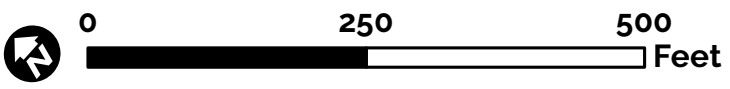


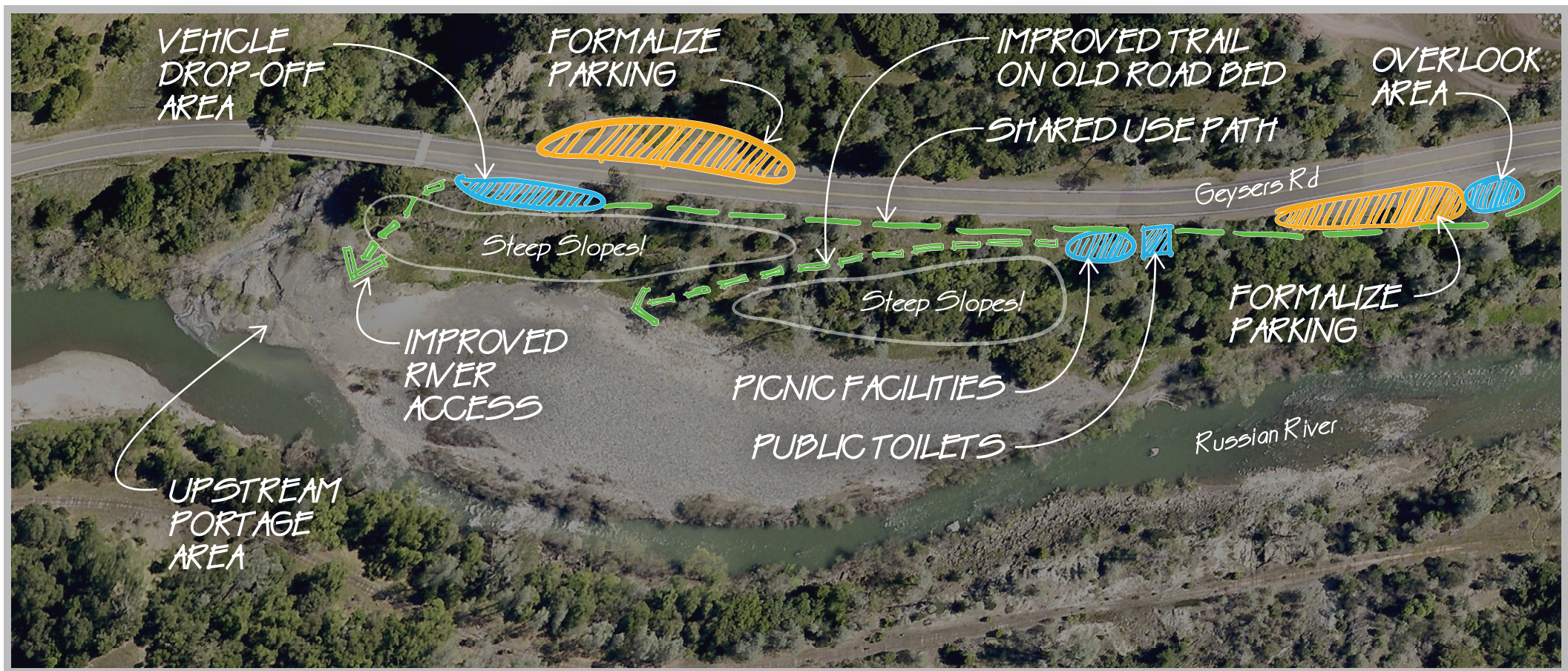
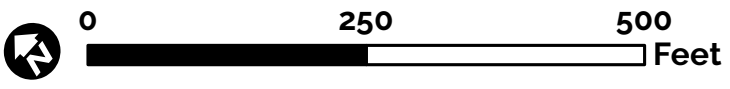
- SITE IMPROVEMENTS
- PARKING
 - RECREATIONAL AMENITIES
 - TRAILS & ACCESS

ALTERNATIVE 1 MAXIMIZE & IMPROVE PARKING



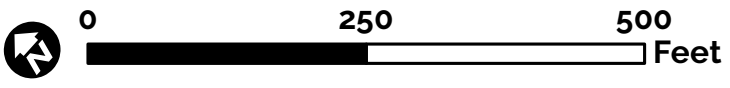
- SITE IMPROVEMENTS
- PARKING
 - RECREATIONAL AMENITIES
 - TRAILS & ACCESS

ALTERNATIVE 2 BALANCE PARKING & BASIC SITE AMENITIES

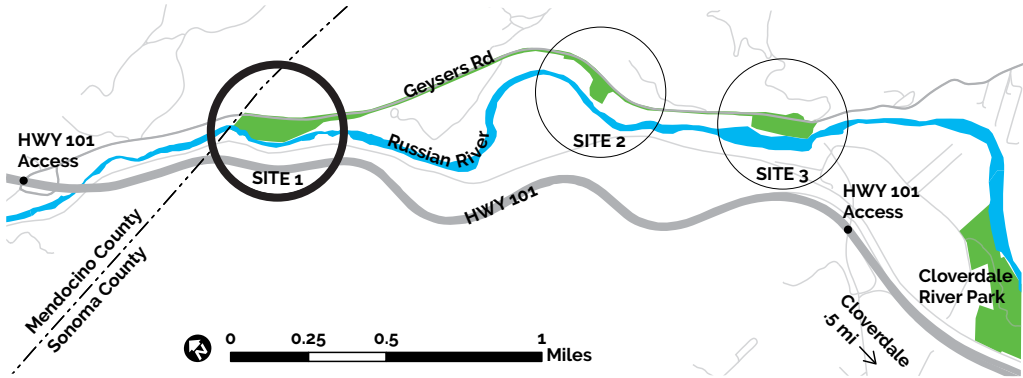


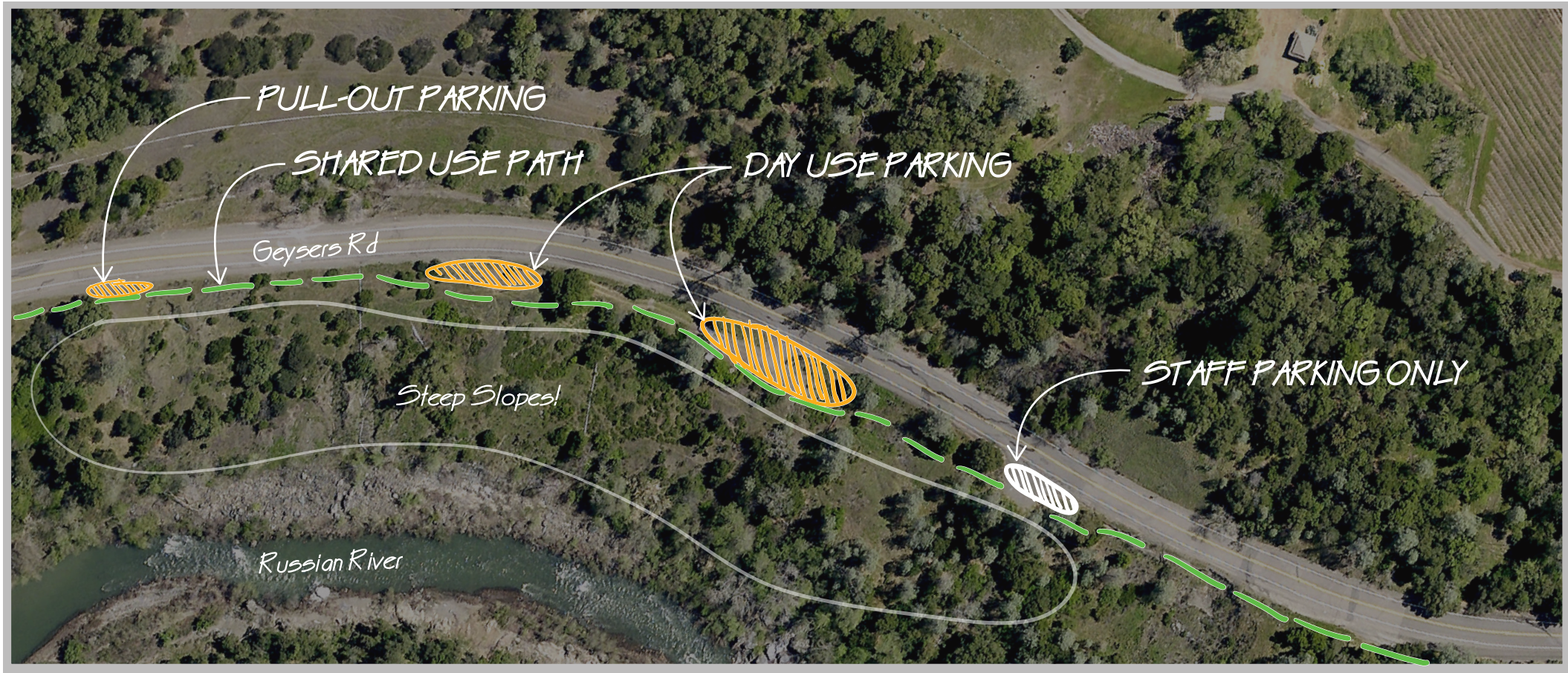
- SITE IMPROVEMENTS
- PARKING
 - RECREATIONAL AMENITIES
 - TRAILS & ACCESS

ALTERNATIVE 3 MAXIMIZE RECREATIONAL AMENITIES ON SITE



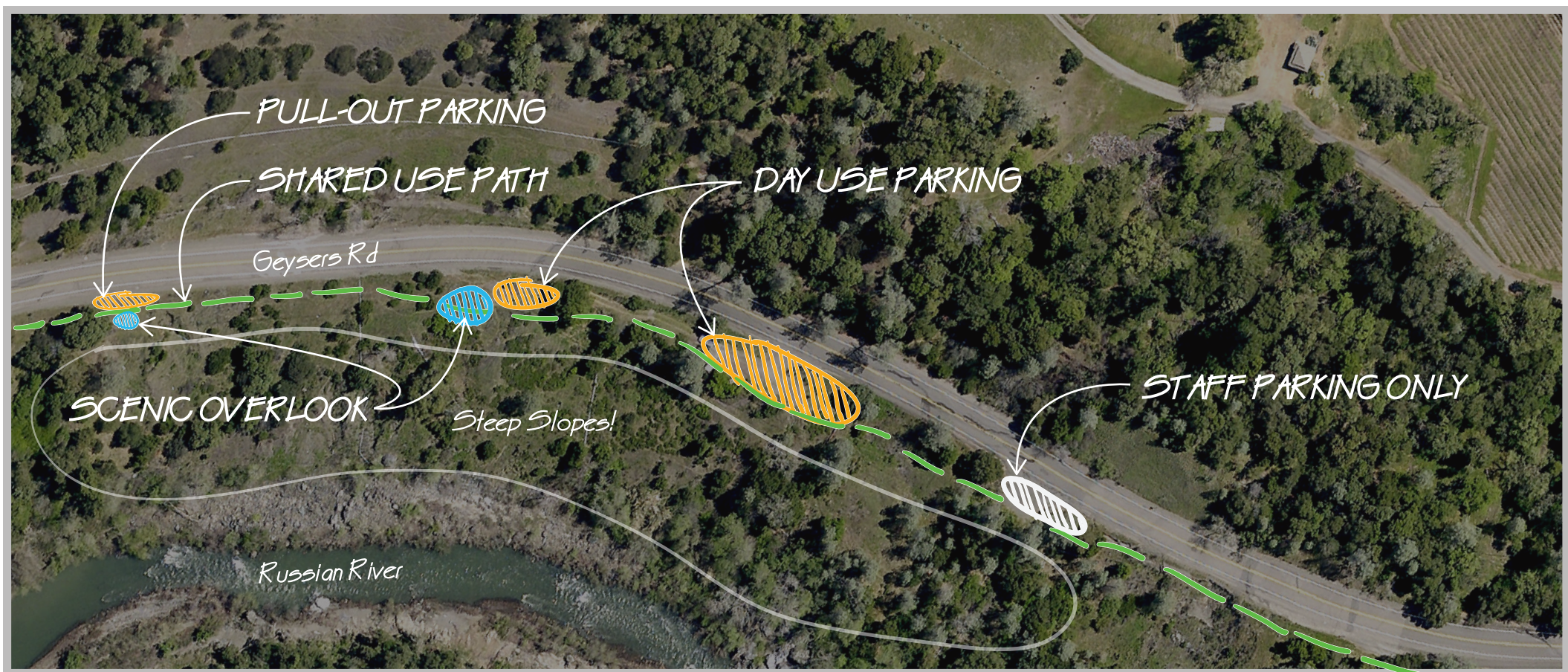
RUSSIAN RIVER PARKWAY SITE 1 LAND USE INTENSITY ALTERNATIVES





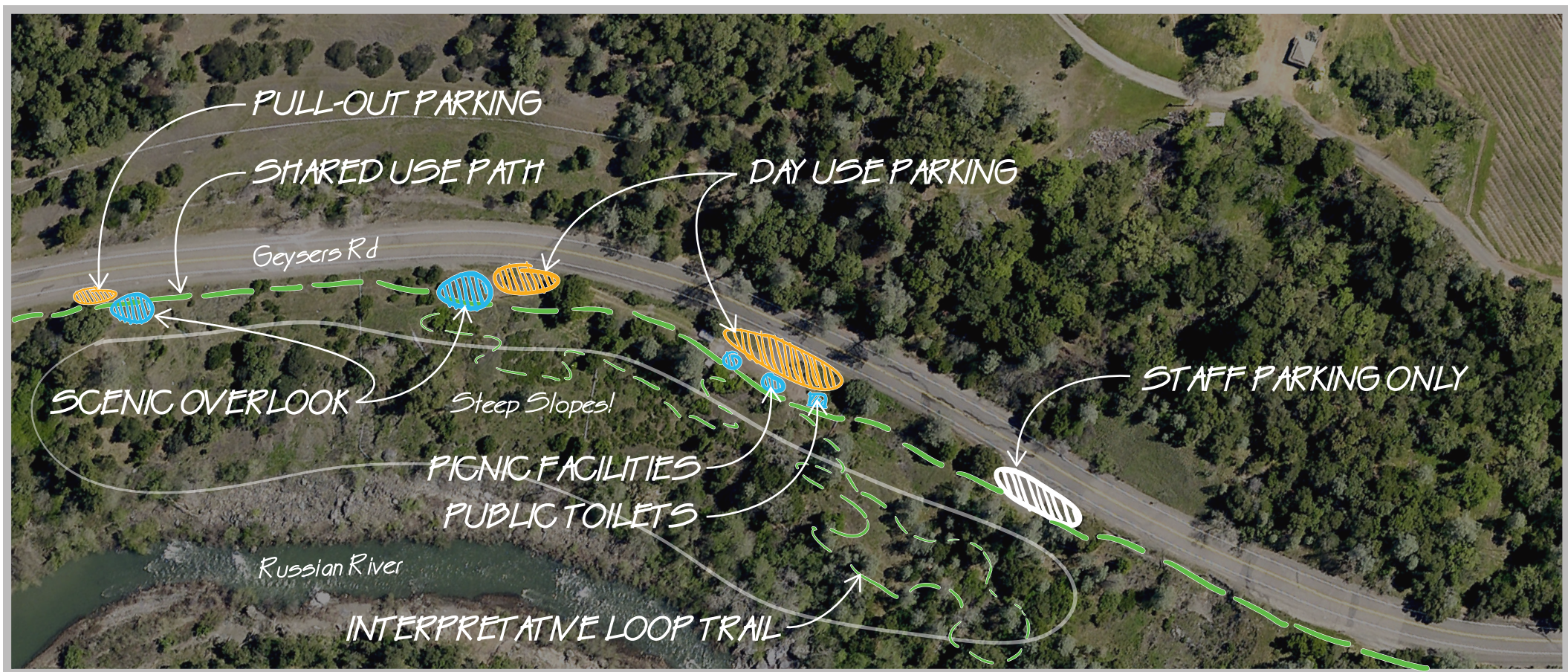
- SITE IMPROVEMENTS
- PARKING
 - RECREATIONAL AMENITIES
 - TRAILS & ACCESS

ALTERNATIVE 1
MAXIMIZE & IMPROVE PARKING



- SITE IMPROVEMENTS
- PARKING
 - RECREATIONAL AMENITIES
 - TRAILS & ACCESS

ALTERNATIVE 2
BALANCE PARKING & BASIC SITE AMENITIES



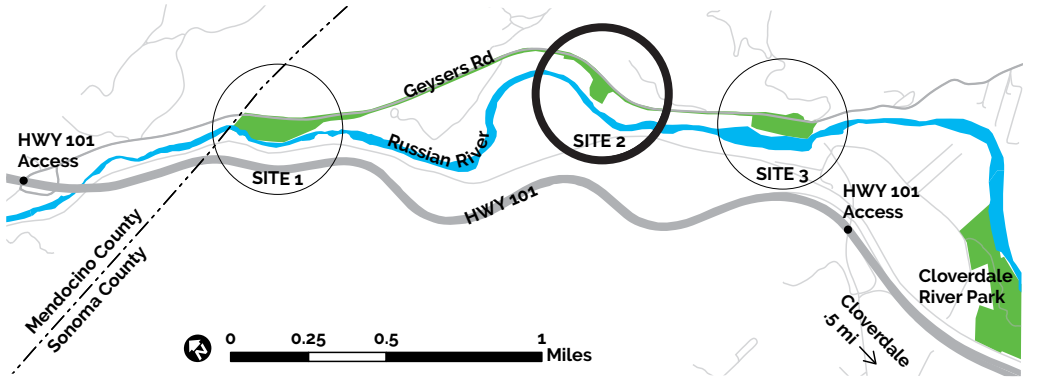
- SITE IMPROVEMENTS
- PARKING
 - RECREATIONAL AMENITIES
 - TRAILS & ACCESS

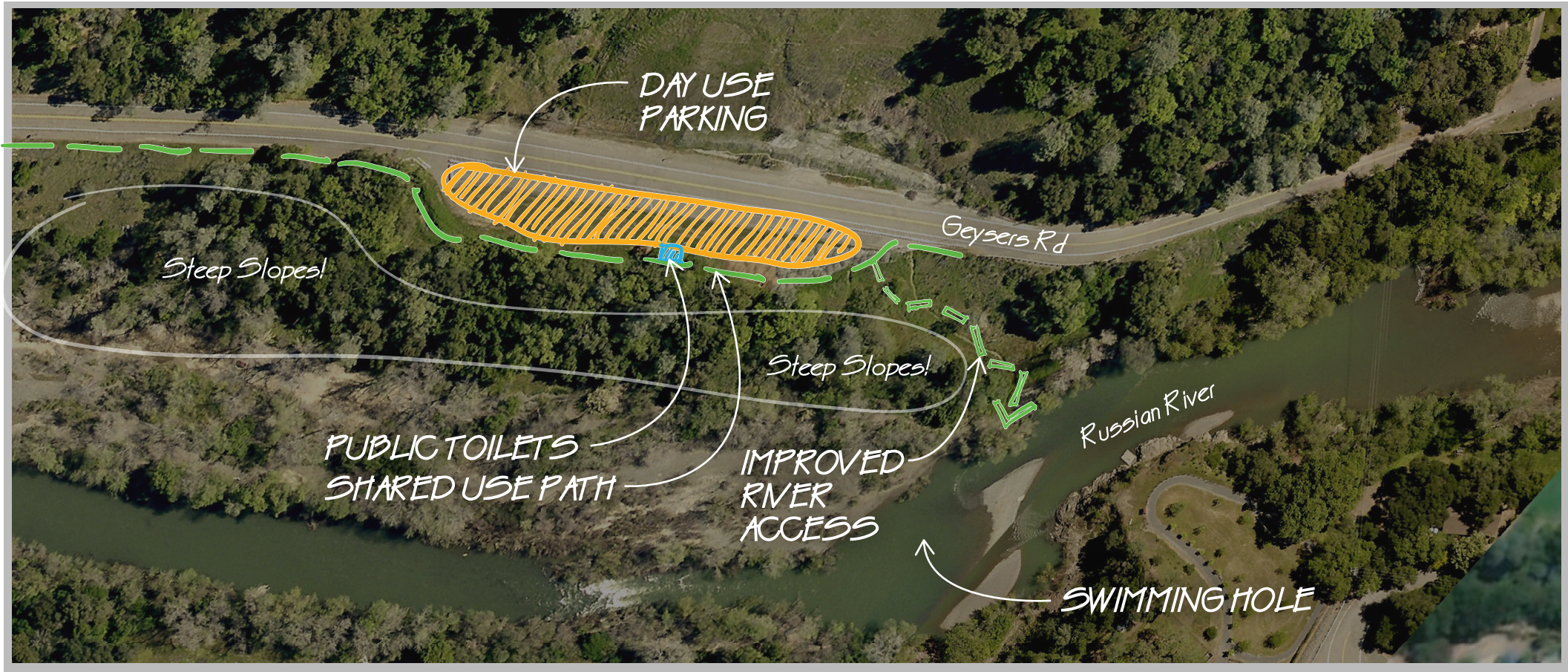
ALTERNATIVE 3
MAXIMIZE RECREATIONAL AMENITIES ON SITE

NOTE: SITE AMENITIES DEPENDENT ON DEVELOPMENT OF SHARED USE PATH

RUSSIAN RIVER PARKWAY SITE 2

LAND USE INTENSITY ALTERNATIVES

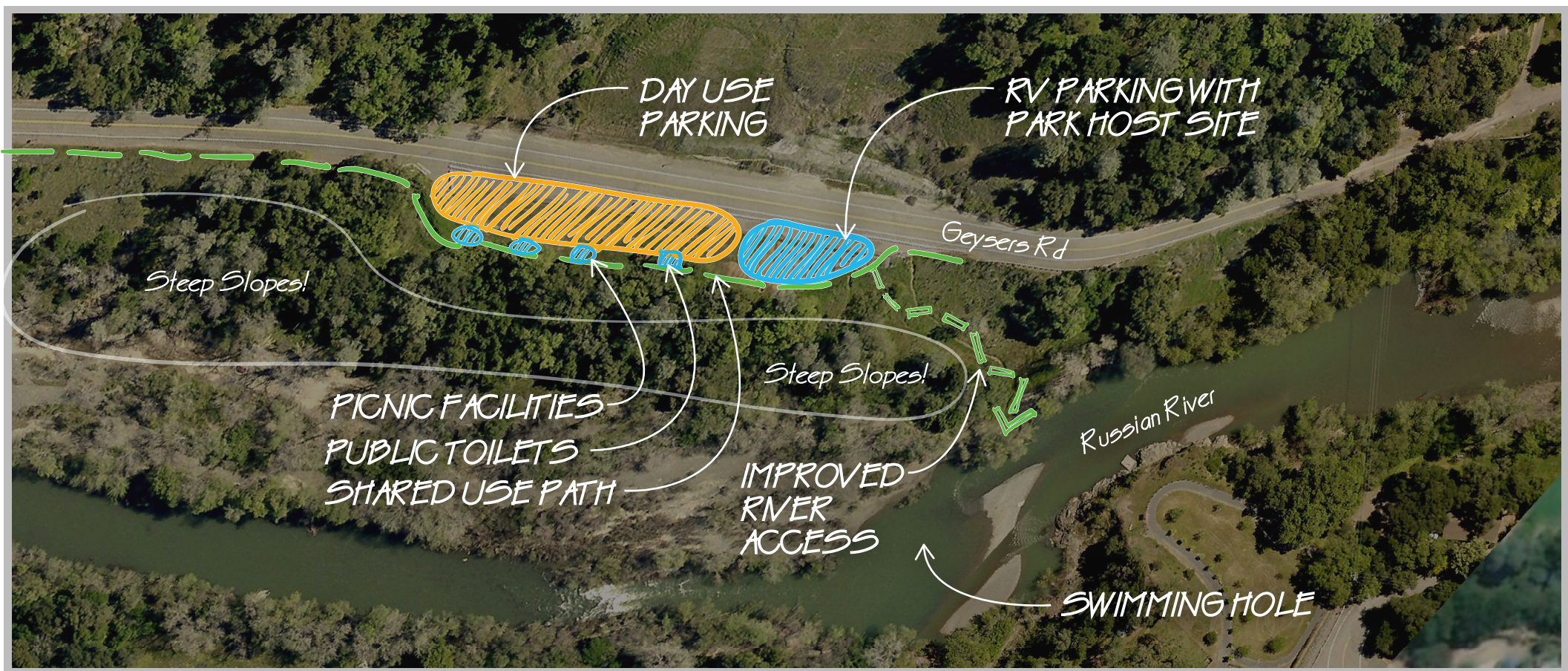




SITE IMPROVEMENTS
 - PARKING
 - RECREATIONAL AMENITIES
 - TRAILS & ACCESS

ALTERNATIVE 1

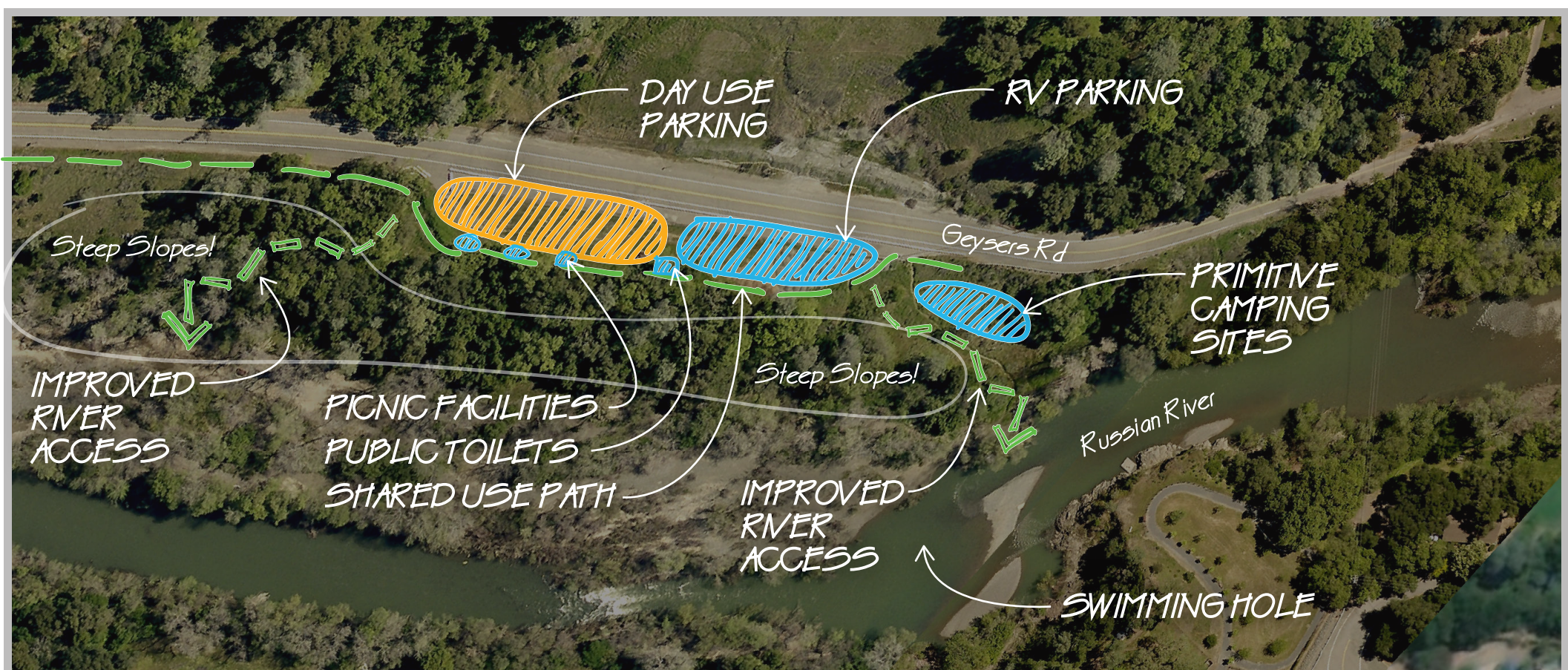
MAXIMIZE & IMPROVE PARKING



SITE IMPROVEMENTS
 - PARKING
 - RECREATIONAL AMENITIES
 - TRAILS & ACCESS

ALTERNATIVE 2

BALANCE PARKING & BASIC SITE AMENITIES



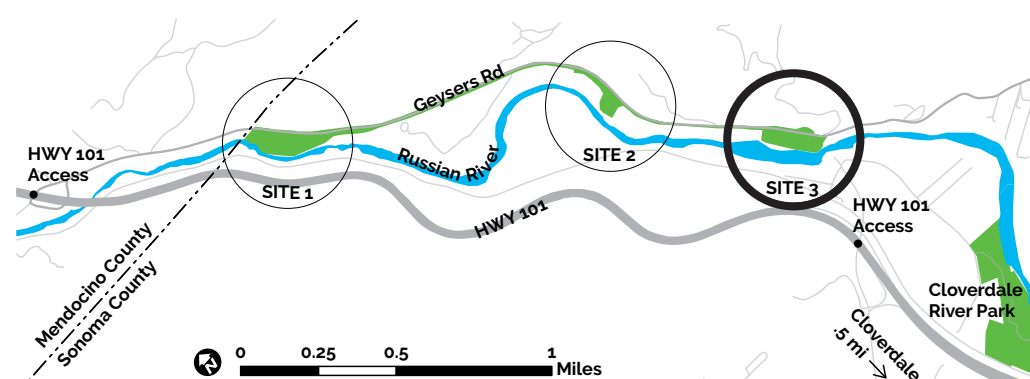
SITE IMPROVEMENTS
 - PARKING
 - RECREATIONAL AMENITIES
 - TRAILS & ACCESS

ALTERNATIVE 3

MAXIMIZE RECREATIONAL AMENITIES ON SITE

RUSSIAN RIVER PARKWAY SITE 3

LAND USE INTENSITY ALTERNATIVES



alta

