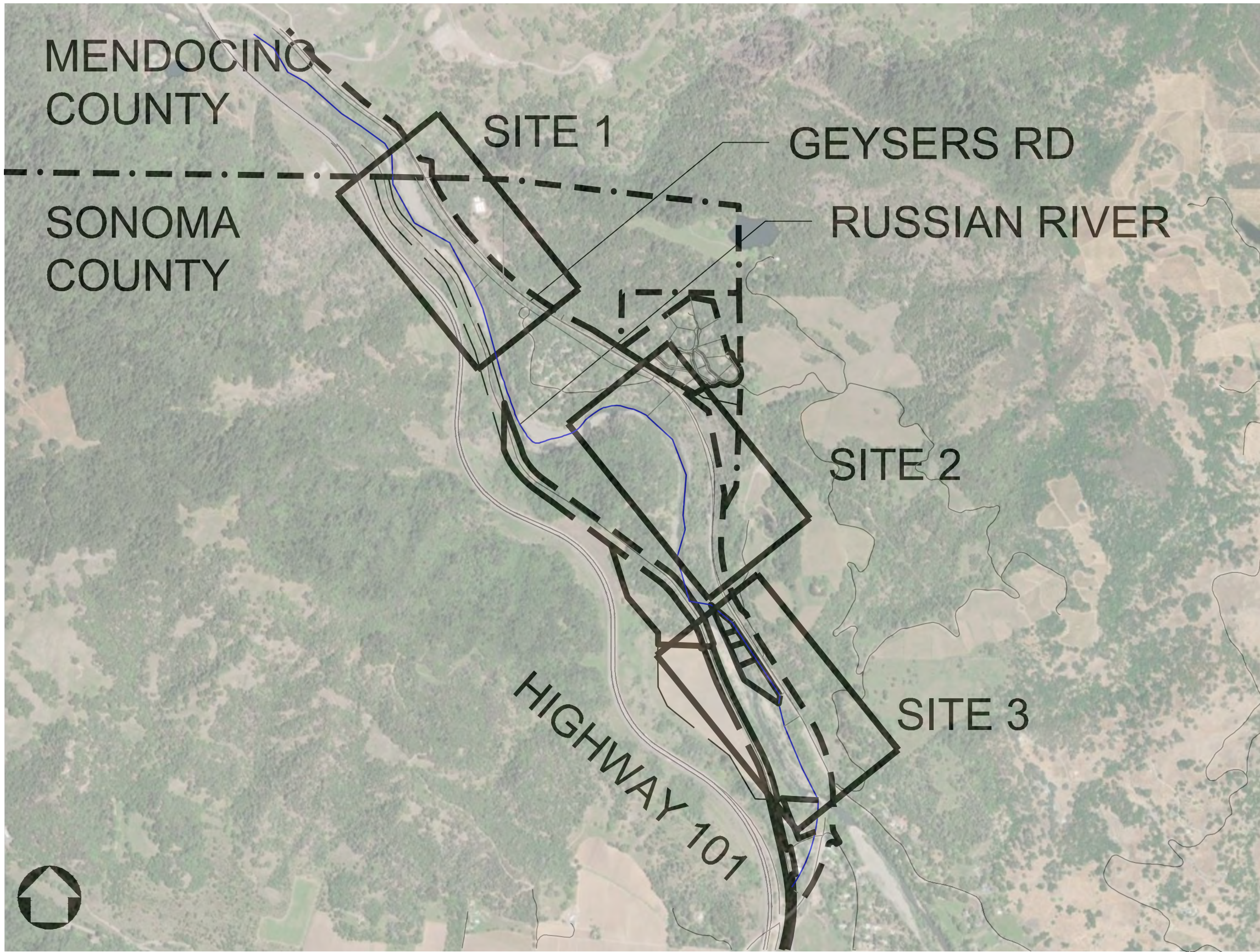


RUSSIAN RIVER PARKWAY

MASTER PLAN



PROJECT LOCATION
NOT TO SCALE

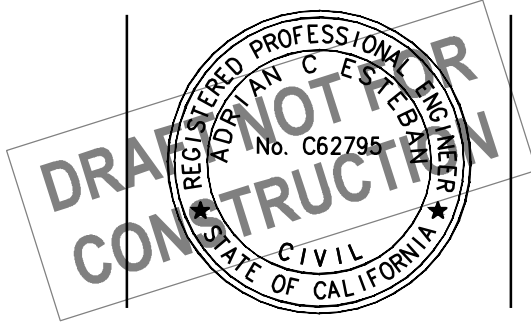
SHEET INDEX

SHEET NO.	DRAWING NO.	DESCRIPTION
1	G101	COVER SHEET
2	LS101	SITE PLAN 01
3	LS102	SITE PLAN 02
4	LS103	SITE PLAN 03

NOTE: THIS FIGURE IS INTENDED ONLY FOR REFERENCE, CONCEPTUAL PLANNING, AND INFORMATIONAL PURPOSES. THIS FIGURE SHOULD NOT BE USED TO ESTABLISH BOUNDARIES, PROPERTY LINES, LOCATION OF OBJECTS, OR TO PROVIDE ANY OTHER INFORMATION TYPICALLY NEEDED FOR FINAL DESIGN, CONSTRUCTION OR ANY OTHER PURPOSE WHEN ENGINEERED PLANS ARE REQUIRED.

PROJECT NO:	2020-240
DESIGNED BY:	RB
DRAWN BY:	JR
REVIEWED BY:	JP
DATE:	2/23/24
SCALE:	AS SHOWN

MARK	DESCRIPTION	ISSUE	DATE	INITIAL



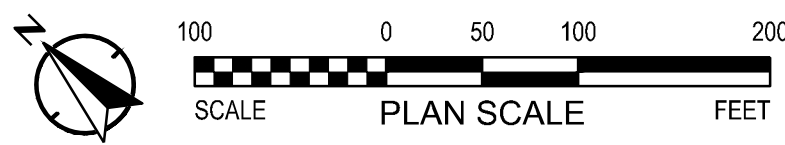
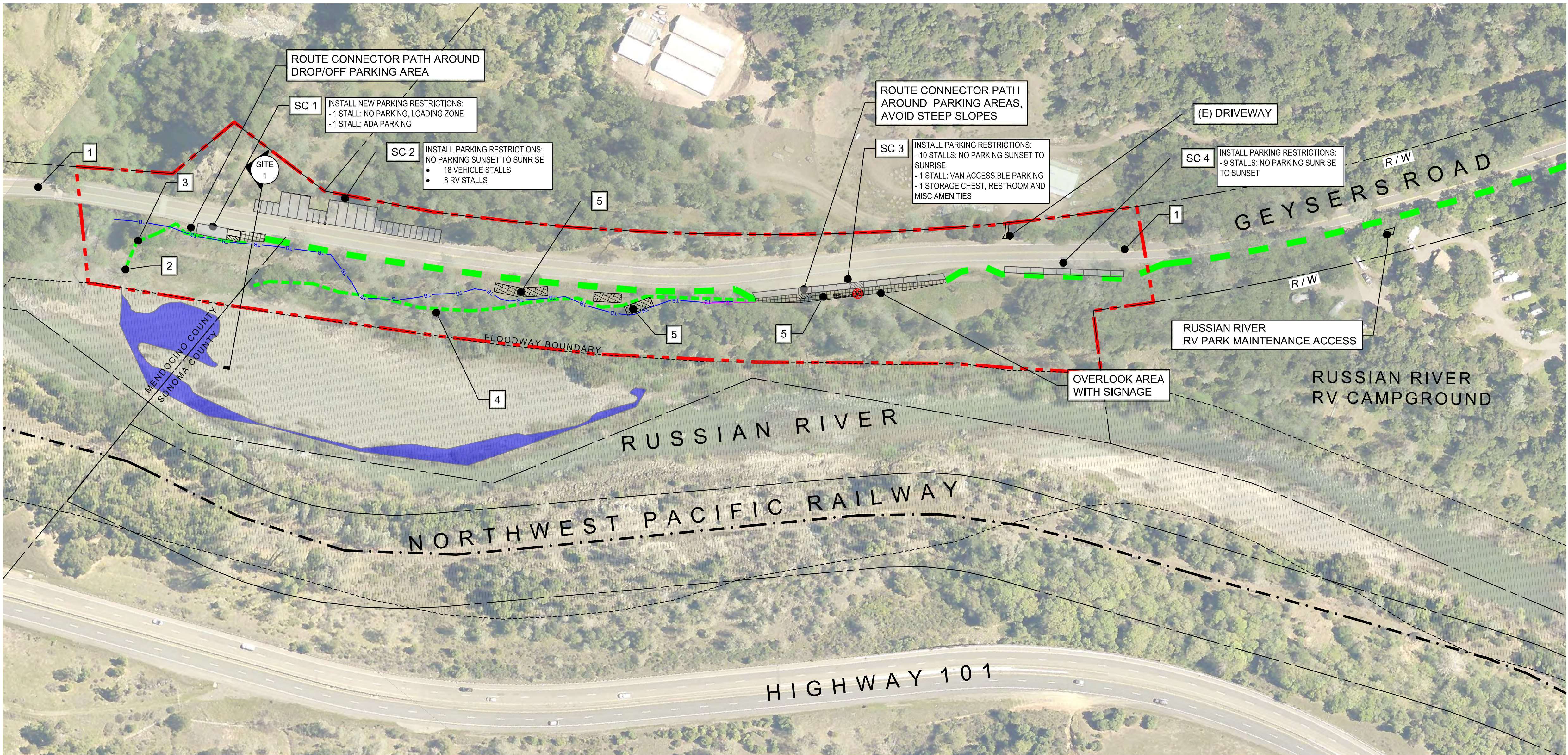
304 12th Street, Suite 2A | Oakland, CA 94607
510-540-5008 | allago.com



2300 County Center Drive
Suite 120A
Santa Rosa, CA 95403

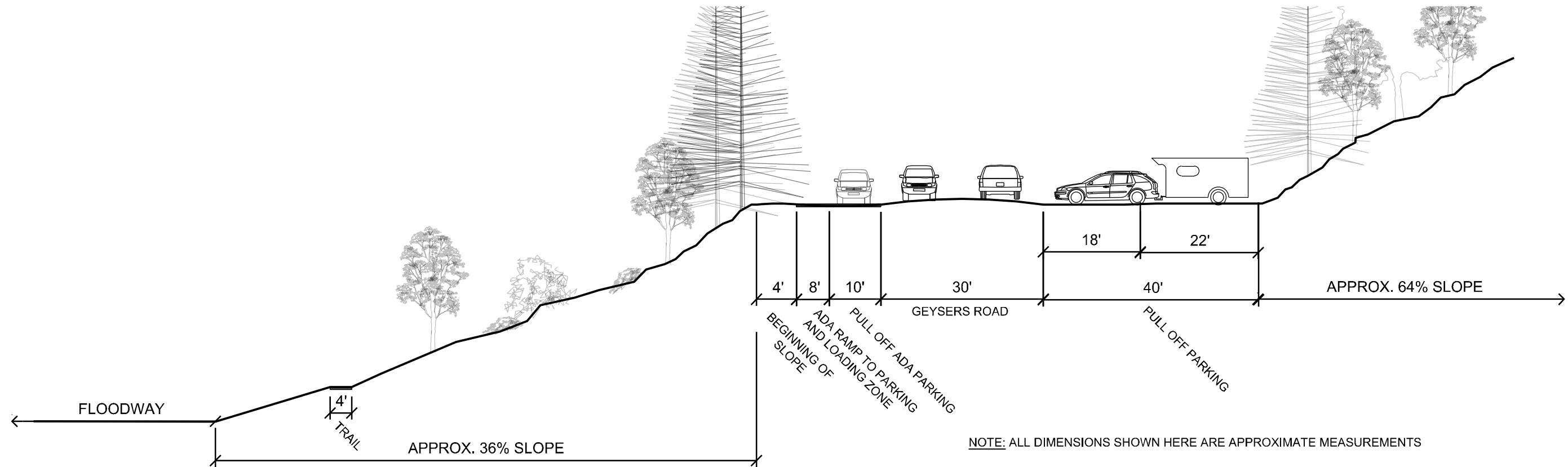
SHEET TITLE
**RUSSIAN RIVER PARKWAY
COVER SHEET**

SHEET NO.
G101



SITE 01 PLAN

SCALE: 1" = 100'



CONCEPTUAL SECTION - SITE 1

1" = 20'

PARKING PULLOUT SCHEDULE

	Max. recommended vehicles	# of Stalls on Plan	Side	Dimensions		Sight Distance (ft)	
Sonoma County				Width	Length	North	South
SC 1	5	2	West	22'	110'	500+	500+
SC 2	30	26	East	40'	300'	500+	500+
SC 3	14	11	West	30' 4"	320'	500+	500+
SC 4	9	9	West	26' 9"	210'	500+	500+
SC 5	13	13	West	35'10"	120'	500+	320
SC 6	7	7	East	18' 1"	160'	500+	455
SC 7	7	7	East	10'	150'	465	500+
SC 8	0	0	West	39'10"	65'	315	500+
SC 9	3	3	West	27'	60'	500+	500+
SC 10	8	8	East	25' 9"	170'	500+	500+
SC 11	14	14	East	16' 3"	480'	500+	185
SC 12 (North Dwy)	0	n/a	West	n/a	n/a	500+	500+
SC 12 (South Dwy)	0	n/a	West	n/a	n/a	500+	360
	TOTAL: 110	TOTAL: 100					
Note: bold = insufficient sight distance for 50-mph design speed							

Note: **bold** = insufficient sight distance for 50-mph design speed

NOTE: REFER TO MEMORANDUM "Analysis of Viability of Pullouts on Geysers Road" (2022) FOR ADDITIONAL DETAIL ON PARKING PULLOUT ANALYSIS AND RECOMMENDATIONS

GENERAL SHEET NOTES

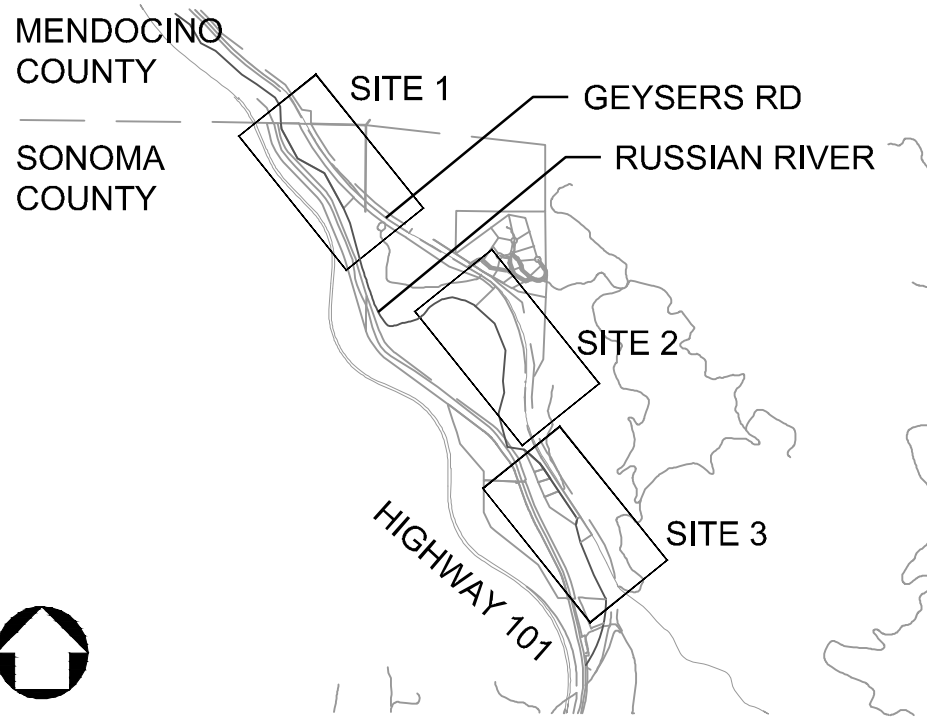
LEGEND

- TB ARDR TOP OF BANK
- TB ESTIMATED TOP OF BANK
- ARDR WETLANDS OR OTHER WATERS
- FEMA FLOODWAY AREA
- PROPERTY LINES
- PROPOSED CONNECTOR PATH (FUTURE)
- PROPOSED HIKING TRAIL
- PROJECT SITE BOUNDARY
- RESTROOM
- PICNIC AREA
- PULL OFF PARKING ON EXISTING SHOULDER
- CONCRETE PAVING

NOTES

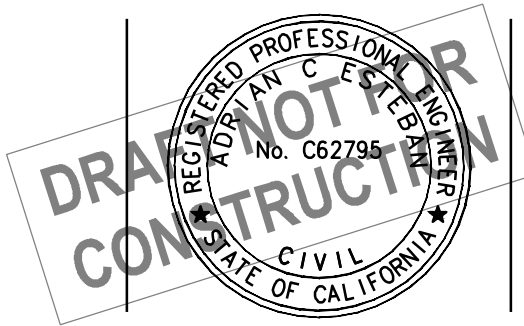
- TRAFFIC CALMING MEASURES. OPTIONS INCLUDE:
 - OPTICAL SPEED BARS
 - ADDITIONAL SIGNAGE
 - LANE REDUCTION (11')
 - BARRIERS ON SHOULDERS
 - RADAR SPEED SIGNS
- UPSTREAM PORTAGE AREA. BLUE TRAIL SIGNAGE. NO OTHER IMPROVEMENTS.
- REPAIR EXISTING STAIRS. OPTIONS INCLUDE:
 - TIMBER STEPS
 - REGRADE TRAIL
 - REPAIR EROSION
- IMPLEMENT TRAIL ON EXISTING ROAD BED
- PICNIC AND RESTROOM FACILITY AREA AROUND 4300 SF

KEY MAP



PROJECT NO:	2020-240
DESIGNED BY:	RB
DRAWN BY:	JR
REVIEWED BY:	RB
DATE:	2/23/24
SCALE:	AS SHOWN

MARK	DESCRIPTION	ISSUE	DATE	INITIAL



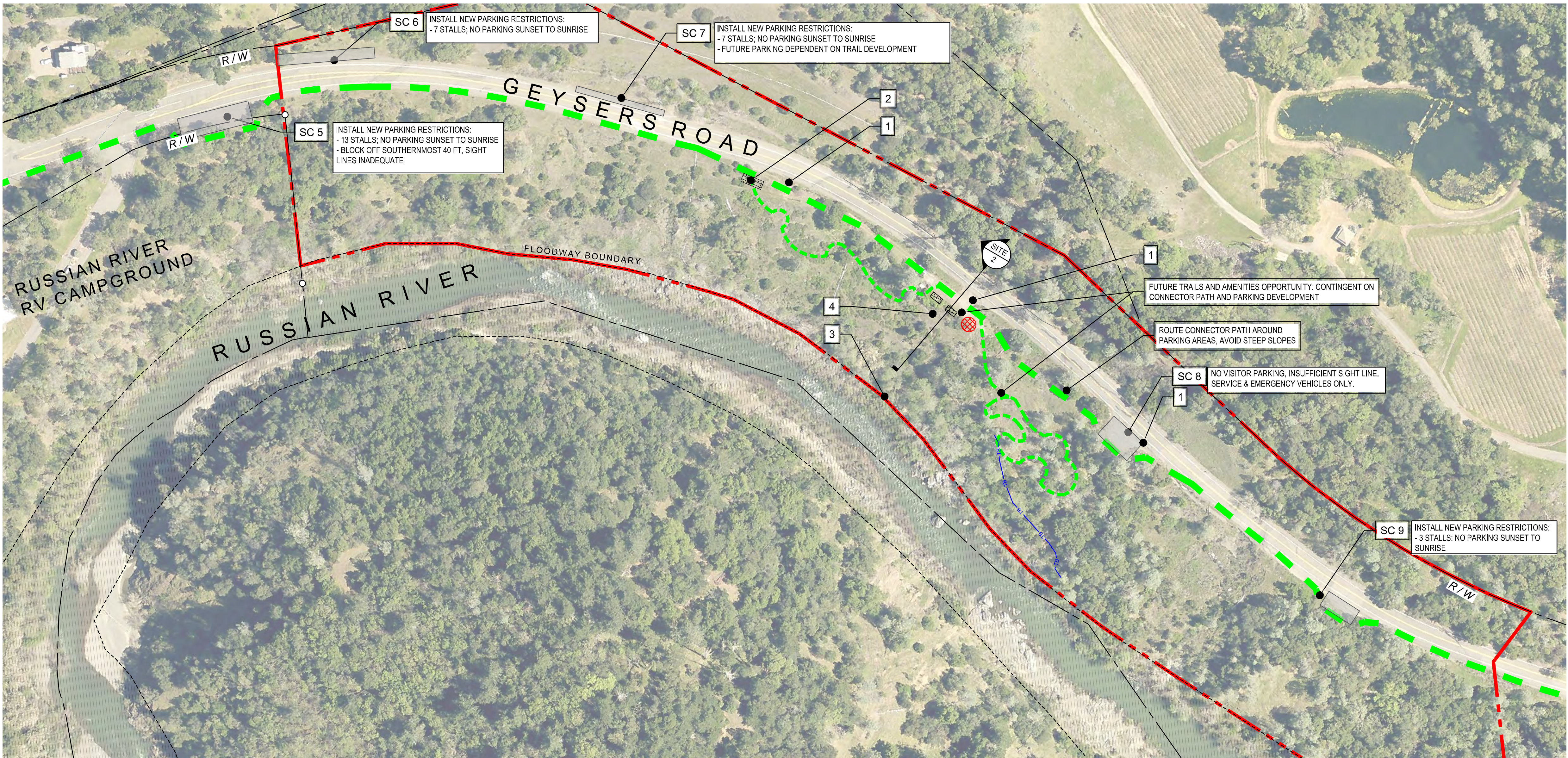
alta

304 12th Street, Suite 2A | Oakland, CA 94607
510-540-5008 | allago.com

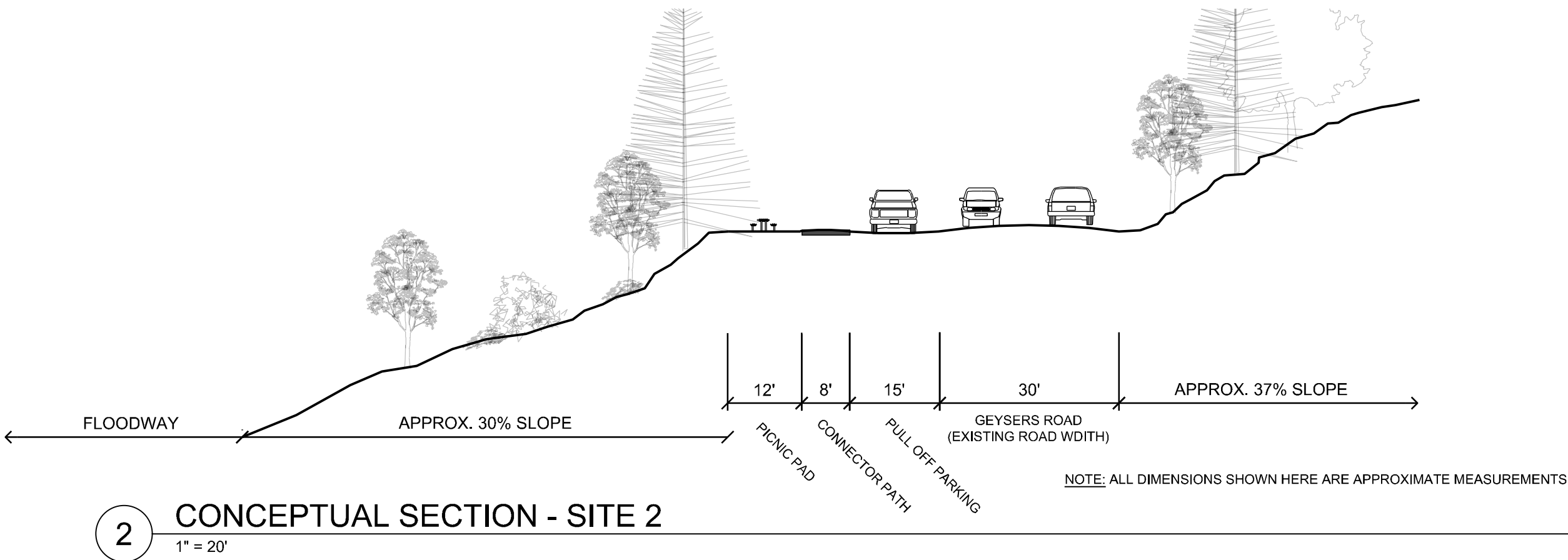


2300 County Center Drive
Suite 120A
Santa Rosa, CA 95403

SHEET TITLE	SONOMA-MENDOCINO	SHEET NO.
RUSSIAN RIVER PARKWAY MASTER PLAN SITE PLAN 01		LS101
		SHEET 2 OF 4



SITE 02 PLAN
SCALE: 1" = 100'



GENERAL SHEET NOTES

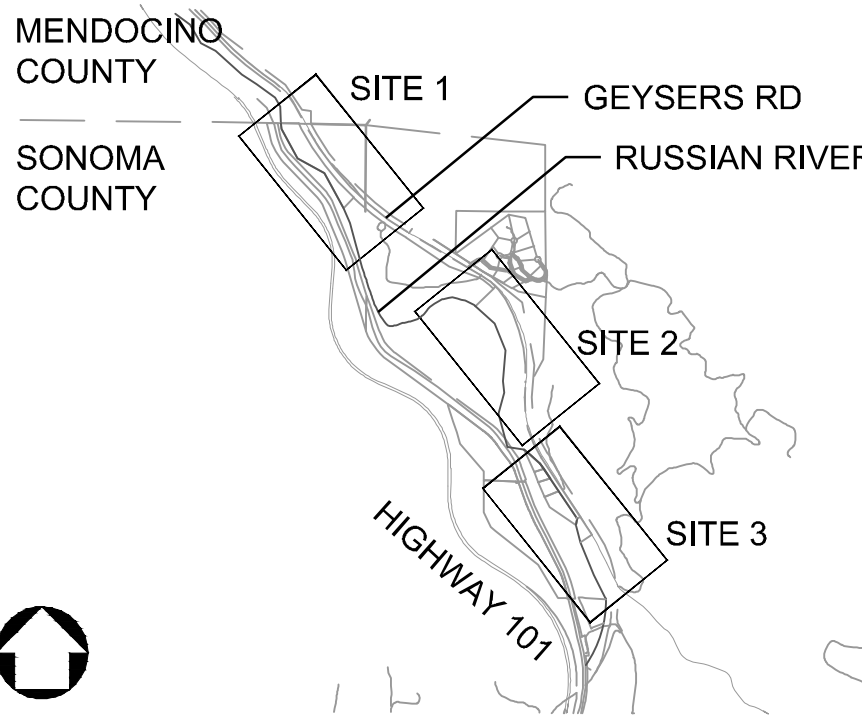
LEGEND

- TB — ARDR TOP OF BANK
- ARDR WETLANDS OR OTHER WATERS
- FEMA FLOODWAY AREA
- PROPERTY LINES
- PROPOSED CONNECTOR PATH (FUTURE)
- PROPOSED HIKING TRAIL
- PROJECT SITE BOUNDARY
- RESTROOM
- PICNIC AREA
- PULL OFF PARKING ON EXISTING SHOULDER

NOTES

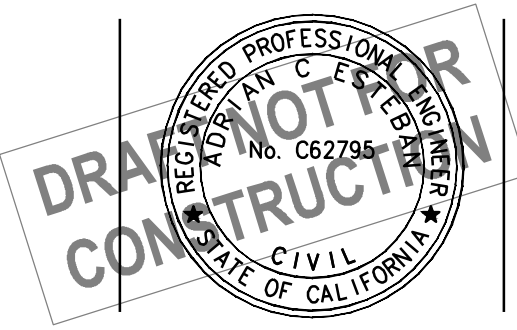
- RESTRICT PARKING TO ONLY EMERGENCY ACCESS/STAFF PARKING
- 500 SF OVERLOOK AREA AND VIEWING PLATFORM
- NO PROPOSED CONSTRUCTION TO OCCUR IN THE FLOODPLAIN.
- SITE 2 DEVELOPMENT AND AMENITIES DEPENDENT ON CONNECTOR PATH DEVELOPMENT

KEY MAP



PROJECT NO: 2020-240
DESIGNED BY: RB
DRAWN BY: JR
REVIEWED BY: JP
DATE: 2/23/24
SCALE:

MARK	DESCRIPTION	ISSUE	DATE	INITIAL



alta

304 12th Street, Suite 2A | Oakland, CA 94607
510-540-5008 | allago.com



2300 County Center Drive
Suite 120A
Santa Rosa, CA 95403

SHEET TITLE

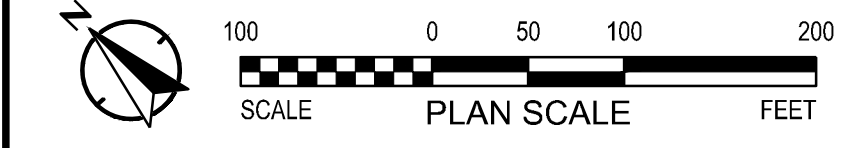
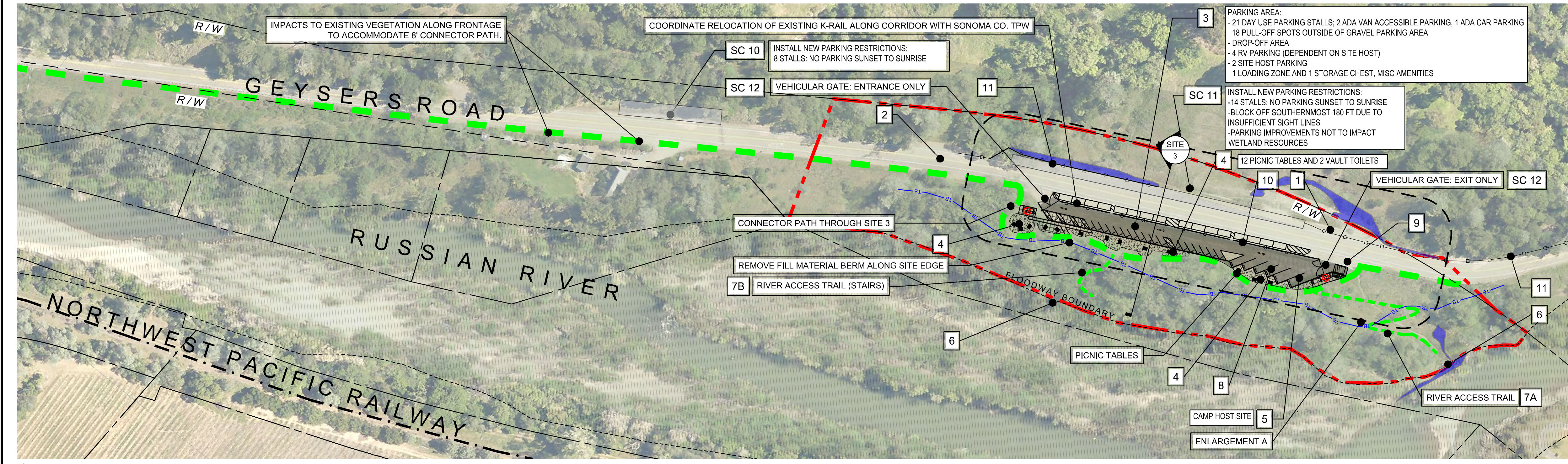
SONOMA-MENDOCINO

RUSSIAN RIVER PARKWAY
MASTER PLAN
SITE PLAN 02

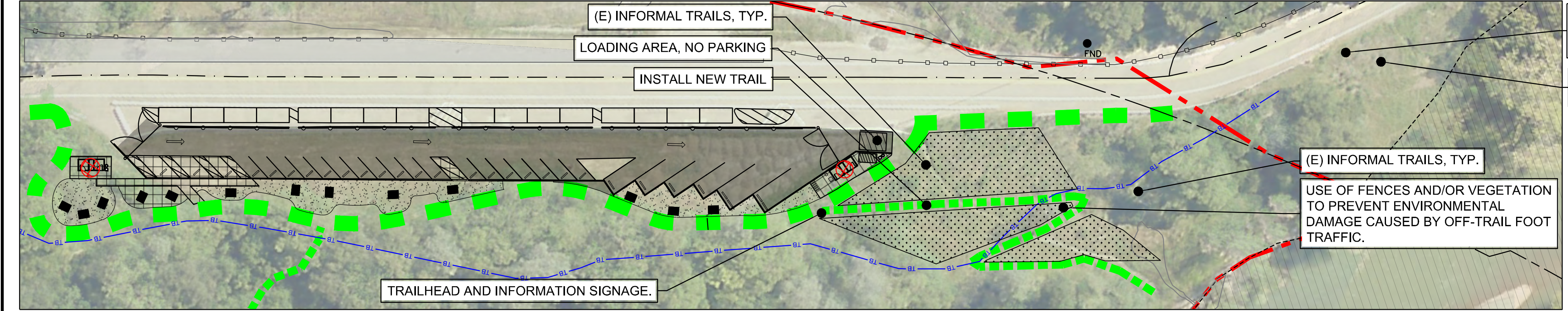
SHEET NO.

LS102

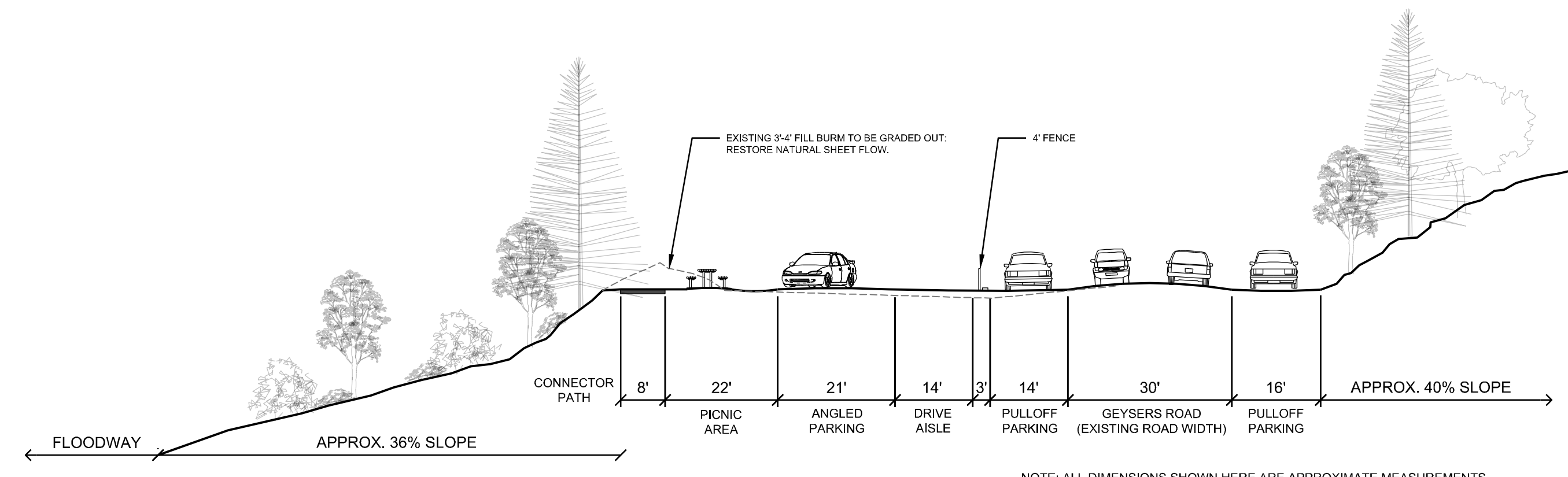
SHEET 3 OF 4



SITE 03 PLAN
SCALE: 1" = 100'

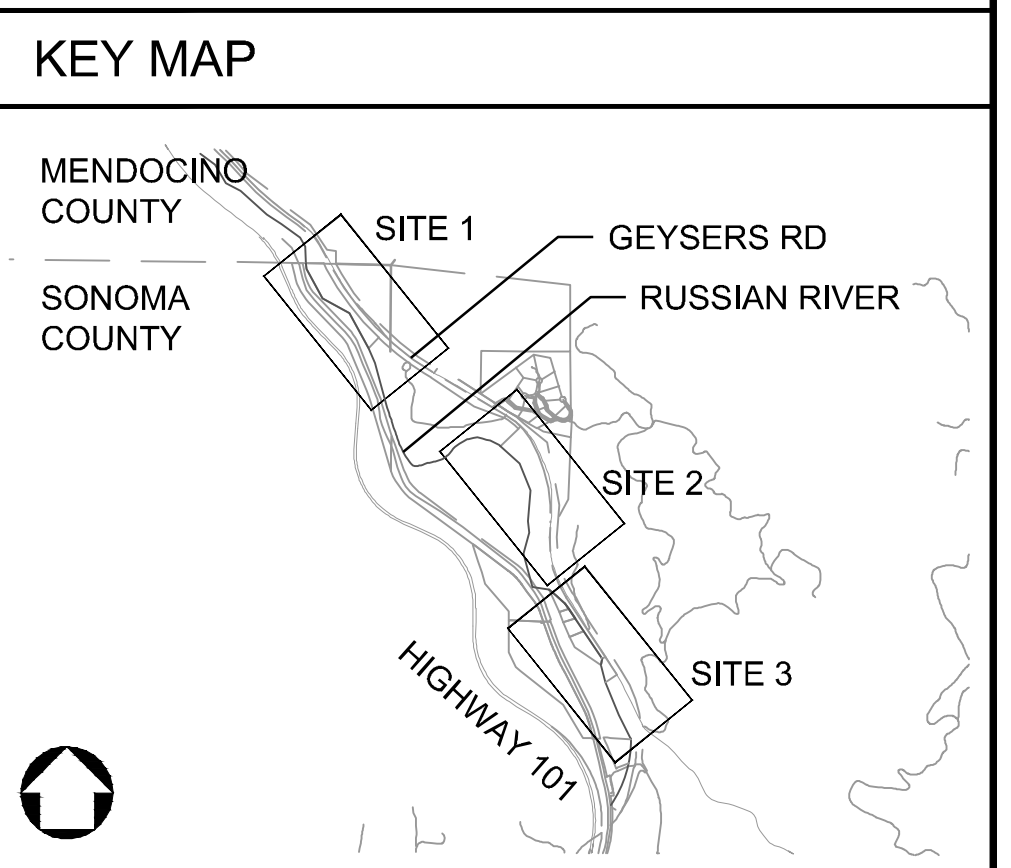


ENLARGEMENT A
SCALE: 1" = 50'



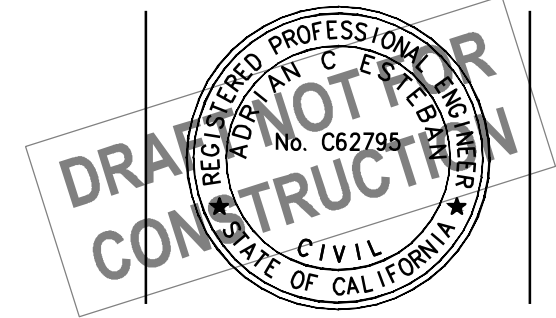
3 CONCEPTUAL SECTION - SITE 3
1" = 20'

- ### GENERAL SHEET NOTES
- LEGEND**
- TB — ARDR TOP OF BANK
 - ARDR WETLANDS OR OTHER WATERS
 - FEMA FLOODWAY AREA
 - — — PROPERTY LINES
 - — — PRECAST CONCRETE RAIL FENCE
 - — — K-RAIL FENCE
 - PROPOSED CONNECTOR PATH (FUTURE)
 - PROPOSED HIKING TRAIL
 - PROJECT SITE BOUNDARY
 - RESTROOM
 - PICNIC AREA
 - PULL OFF PARKING ON EX. SHOULDER
 - GRAVEL FOR PARKING
 - GRAVEL FOR PICNIC AREAS
 - CONCRETE PAVING
- NOTES**
- RESTRICT PARKING OR ALLOW FOR EMERGENCY ACCESS/STAFF PARKING
 - TRAFFIC CALMING MEASURES. OPTIONS INCLUDE:
 - OPTICAL SPEED BARS
 - ADDITIONAL SIGNAGE
 - LANE WIDTH REDUCTION (11')
 - BARRIERS ON SHOULDERS
 - RADAR SPEED SIGNS
 - GRAVEL PARKING AREA FOR (21) CARS, (2) ADA VANS, (1) ADA CAR STALL and (4) OVERSIZED/RV STALLS, (2) SITE HOST SPOTS
 - PICNIC AND RESTROOM FACILITIES
 - POTENTIAL CAMP HOST LOCATION - 2 RV SPOT WITH ELECTRIC POWER HOOK UP
 - NO PROPOSED CONSTRUCTION TO OCCUR IN THE FLOODPLAIN
 - RIVER ACCESS TRAIL. OPTIONS INCLUDE:
 - REGRADE TRAIL
 - REPAIR EROSION
 - REVEGETATE
 - RIVER ACCESS TRAIL (TIMBER STEPS) OPTIONS INCLUDE:
 - REGRADE TRAIL
 - REPAIR EROSION
 - REVEGETATE
 - PROPOSED RV PARKING
 - (16'x25'min per CA Dept of Parks and Rec.)
 - PROTECT-IN-PLACE (E) STORM DRAIN INLET
 - (E) A/C CURB, PROTECT-IN-PLACE, REPAIR AS NECESSARY
 - EXISTING K-RAIL TO BE RELOCATED TO REINFORCE NO PARKING ZONE



PROJECT NO:	2020-240
DESIGNED BY:	RB
DRAWN BY:	JR
REVIEWED BY:	JP
DATE:	2/23/24
SCALE:	

MARK	DESCRIPTION	ISSUE	DATE	INITIAL



2300 County Center Drive
Suite 120A
Santa Rosa, CA 95403